

# TYPES OF ASIAN WOMEN

## CHINESE WOMEN



China is the most populous country in the world, and Chinese women make up a significant portion of the Asian population. They are known for their delicate features, including almond-shaped eyes and slim builds. Chinese women are also known for valuing education and career success.

## JAPANESE WOMEN

Japanese women are often considered some of the most fashionable and sophisticated women in the world. They are known for their smooth, porcelain-like skin and petite frames. Japanese culture also places a high emphasis on politeness and respect, which is reflected in Japanese women's behavior.



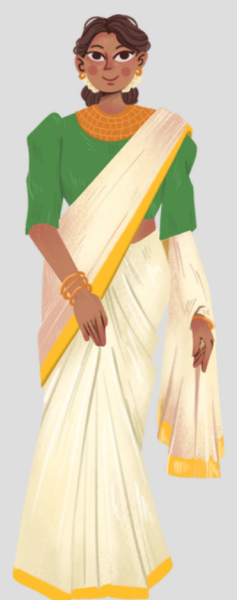
## KOREAN WOMEN



Korean women are known for their flawless skin and beauty rituals, which include using multiple skincare products and wearing protective clothing to prevent sun damage. They are also known for their love of K-pop and Korean dramas.

## INDIAN WOMEN

India is a diverse country, and Indian women come in many different shapes, sizes, and skin tones. They are often known for their bright, colorful clothing and intricate jewelry. Indian culture also places a high emphasis on family and traditional values.

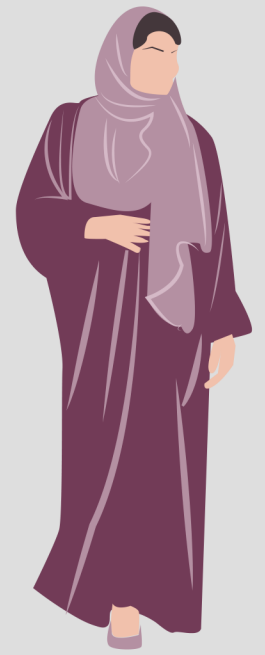


## SOUTH-EAST ASIAN WOMEN

Southeast Asia includes countries such as Vietnam, Thailand, and Indonesia, among others. Women from this region are known for their exotic beauty, with features such as dark hair, tanned skin, and almond-shaped eyes. They are also known for their delicious cuisine, which is a fusion of many different cultural influences.

## MUSLIM WOMEN

While Muslim women can be found all over the world, they are particularly prevalent in Asian countries such as Indonesia and Malaysia. Muslim women often wear traditional clothing such as hijabs and niqabs, and their culture places a high emphasis on modesty.



## CENTRAL ASIAN WOMEN

Central Asian women, such as those from Kazakhstan, Uzbekistan, and Kyrgyzstan, are often characterized by their strong sense of hospitality, traditional values, and beauty.